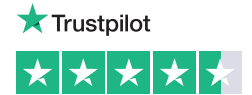


SafeSite Facilities

Evo Barrier System

Specification Sheet

safesite[®]
F A C I L I T I E S



Evo barrier system

The Evo system is comprised of water filled barriers made from UV stabilized polyethylene. Evo barriers come in various heights, lengths and shapes and are all Mira wind tunnel tested.

The mesh panels can be attached to the barriers which improves the overall height, without compromising the wind resistance. The Evo 55 and 1.5 are the same height and width but are differentiated by their lengths. The Evo 55 measures 1m long and the 1.5 is just that - 1.5m in length. The Evo 55 and 1.5 can be used together and can be connected to a corner barrier to negotiate bends and corners. They are also compatible with the same mesh fence panels.

The Evo 80 stands a little higher than the Evo 55 and 1.5 at 800mm tall. The Evo can negotiate bends but is not suitable for creating 90° corners. In comparison to other water-filled barrier systems, all members of the EVO 'family' are very light. The barriers weigh less than 10kg when empty and up to 30kg when filled. The low weight of these barriers means that they are very easy to handle as well as stack for transportation.

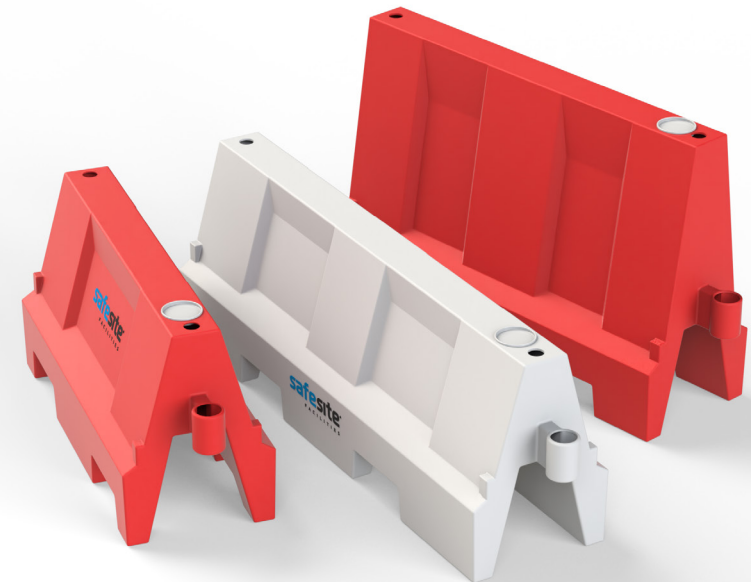
Evo System Specification

Measurements in mm

Type	Length	Width	Height	Weight (kg)	Weight Full (kg)	Colour	Product ID
Evo 55	1000	400	555	8	28	Red	WFS150500
Evo 55	1000	400	555	8	28	White	WFS150510
Evo 55	1000	400	555	8	28	Green	WFS150515
Evo 80	1200	400	800	9	29	Red	WFS150550
Evo 80	1200	400	800	9	29	White	WFS150560
Evo 1.5	1500	400	555	10	30	Red	WFS150450
Evo 1.5	1500	400	555	10	30	White	WFS150460

Key Features

- ▶ Mira wind tunnel tested (withstood speeds of up to 55mph)
- ▶ Easy to stack and transport
- ▶ Can be filled with water or sand
- ▶ Made from UV MDPE
- ▶ Can be reused and recycled
- ▶ Easy to assemble
- ▶ Can positioned on bends and corners (1.5 and 55 only)
- ▶ Chapter 8 compliant
- ▶ Available in different colours (red and white as standard)



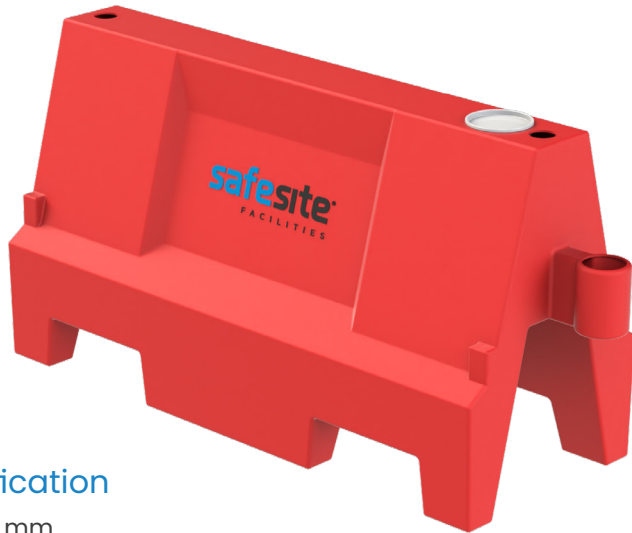


Evo 1 / 55 barrier

The Evo 1 (or 55 as it's also known) 55 Barrier is a visible safety barrier which is perfect for event traffic / control, roadblocks and construction sites.

These barriers can be joined to form a solid wall with zero gaps. Mesh panels can be added to increase the height, and corner units attached to create neat bends and shapes.

These are the light water filled barriers which are easy to handle and install. They are made from UV MDPE to ensure maximum resilience in outdoor locations.



Evo 55 Specification

Measurements in mm

Type	Length	Width	Height	Weight (kg)	Weight Full (kg)	Colour	Product ID
Evo 55	1000	400	555	8	28	Red	WFS150500
Evo 55	1000	400	555	8	28	White	WFS150510
Evo 55	1000	400	555	8	28	Green	WFS150515

Key Features

- ▶ Create a safe, secure, defined perimeter
- ▶ The barriers create a solid wall without gaps
- ▶ Zero fast, speedy installation
- ▶ Barriers for both traffic and pedestrian situations
- ▶ Compatible for post & plank or mini mesh panels
- ▶ Made from UV stabilised prime polyethylene
- ▶ Easy to stack and transport
- ▶ Can incorporate mesh handrail system
- ▶ Allows for angles and curves
- ▶ Fill capacity 20 litres

Linked Evo 55's creating a divide



Joined Evo 55's forming curve





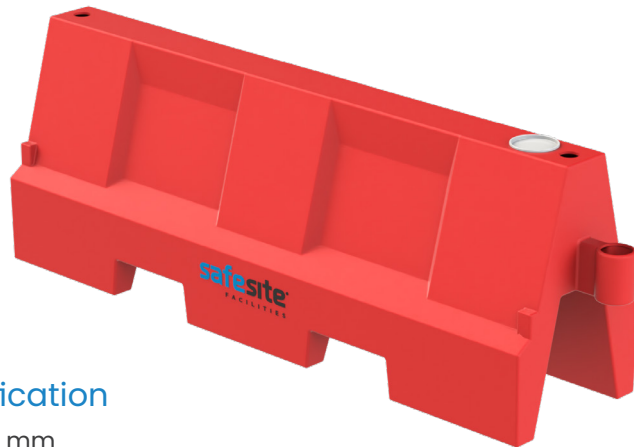
Evo 1.5 barrier

The 1.5m version of the Evo Barriers are frequently seen at construction sites and during temporary roadworks. The barrier are made from high-quality plastic, and can be filled with water, or sand for longer-term projects.

Just as with the 1m evo barriers these barriers can be used with mesh fence panels, mini mesh with reflective panel and post with reflective panel. They also connect with a corner angle for use on sites with tight turns.

The unfilled weight of the barriers is just 10kg and 30kg when full. The light weight and 1.5m length of these barriers means they are swift to position and install.

The units interlock together to make a single structure so no one can slip or trip between the barriers. Each barrier can be stacked for ease of transportation.



Evo 1.5 Specification

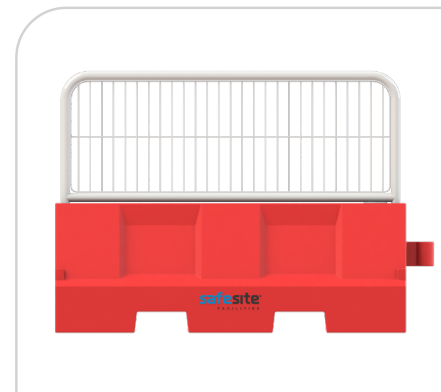
Measurements in mm

Type	Length	Width	Height	Weight (kg)	Weight Full (kg)	Colour	Product ID
Evo 1.5	1500	400	555	10	30	Red	WFS150450
Evo 1.5	1500	400	555	10	30	White	WFS150460

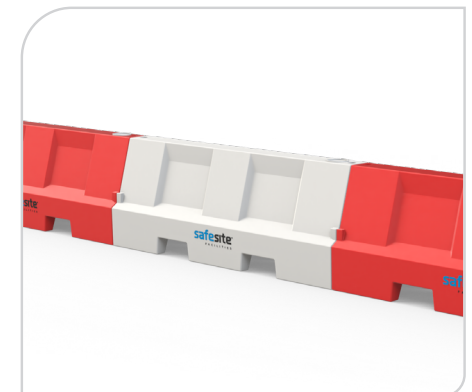
Key Features

- > Interlocks without need for additional accessories
- > Can be filled with water or sand
- > Compatible with post / reflective panel, and mesh fence
- > Compatible with Evo barrier range
- > Made from UV stabilized MDPE for extended outdoor use
- > Easy to stack and transport

Evo 1.5 with mesh fence add on



Evo 1.5 joined in a row





Evo 80 barrier

Evo 80 Barriers can be water filled or for more permanent requirement sand filled and can be assembled with ease.

They are designed to create a solid wall leaving no gaps between each barrier when linked together. Produced from UV stabilised prime polyethylene, each design is fully stackable for ease of transport and storage.

They are predominantly produced in red or white but other colours are available if required.



Evo 80 Specification

Measurements in mm

Type	Length	Width	Height	Weight (kg)	Weight Full (kg)	Colour	Product ID
Evo 80	1200	400	800	9	29	Red	WFS150550
Evo 80	1200	400	800	9	29	White	WFS150560

Key Features

- > Constructed from UV stabilised prime polyethylene
- > Ideal for site delineation and safety
- > Compliant with Chapter 8 Street Works
- > Interlocking design allows a continuous safety barrier
- > Compatible with post & plank or mini mesh panels
- > Easily stackable for transport and storage
- > Custom colours available
- > High visibility
- > 12x barriers per oversized pallet
- > Delivery anywhere in the UK

Evo 80 securing site perimeter



Evo 80 creating enclosure





Evo barrier mesh fence extension

Each Evo barrier model within the system can be enhanced using the mesh extension panel add on, when installing the fence panel onto either the Evo 55 or 1.5 an overall height of 1m can be achieved.

Supplied in highly visible alternate red and white colours, the mesh extended 1 meter high Evo 55 and 1.5 barriers can be enhanced further with bright red and white reflective rails, which have been purposely designed to fit securely to the barrier. The reflective rails are a great addition to the water filled barriers for both traffic and pedestrian situations.

The mesh fence extension gives the Evo 80 additional height, deterring passers by from potentially climbing over the barrier. In addition to the mesh fence add on the Evo 80 barrier is also compatible with the post and rail extensions, the Post and Rail attachment is perfect for adding visibility to the barrier, with incorporated hi-vis reflective strip.

Evo Fence Extension Specification

Measurements in mm

Product	Length	Thickness**	Height*	Weight (kg)	Type	Colour	Product ID
Evo 55	960	38	560	4	Mesh Panel	White	WFS150920
Evo 55	960	38	560	4	Reflective Panel	White	WFS150922
Evo 1.5	1450	38	560	6	Mesh Panel	White	WFS150470
Evo 1.5	1450	38	560	6	Reflective Panel	White	WFS150480
Evo 80	1150	38	525	5	Mesh Panel	White	WFS150570
Evo 80	1150	38	525	5	Reflective Panel	White	-
Evo 80	1220	90	1150	1.5	Post & Rail	Red/White	WFS150580

**Approximate thickness. *Height of panel only does not include legs. Post & Rail system total height only.

Key Features

- ▶ Reflective panel extension available
- ▶ Extends overall height of each Evo model
- ▶ Evo 80 post and rail system available

Evo 55 with mesh fence extension



Evo 55 with reflective panel extension



Evo 80 with mesh fence extension



Evo 1.5 with mesh fence extension



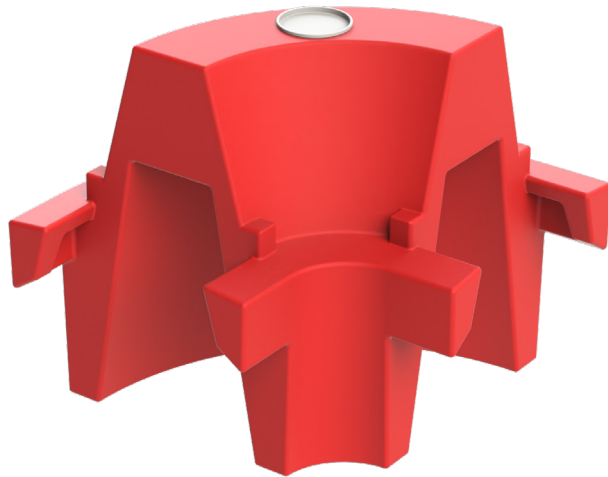


Evo 55 & 1.5 barrier 90° corner section

An extra benefit to using either the Evo 55 or 1.5 barrier is its compatibility with the Evo angle attachment which allows the Evo 55 and 1.5 barriers to navigate 90° angles.

The Evo 90° corner section is very easy to install, simply align the corner pocket over the barrier lugs and gently slot the angle section into place.

It's also easy to manoeuvre into position while empty, yet once filled provides a substantial addition to the Evo traffic safety system.



Evo 55 & Evo 1.5 Corner Section Specification

Measurements in mm

Length	Width	Height	Weight (kg)	Weight Full (kg)	Colour	Product ID
430	580	555	4.5	18.5	Red	WFS150520
430	580	555	4.5	18.5	White	WFS150530

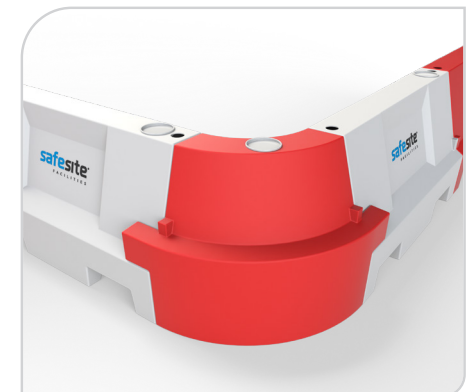
Key Features

- ▶ Create 90° turns with ease
- ▶ Compatible with both Evo 55 or 1.5 barrier
- ▶ Can also be water filled
- ▶ Quick and easy to manoeuvre into position
- ▶ Available in red and white
- ▶ Fits onto either end of the Evo 55 or 1.5
- ▶ Can produce left or right hand corners
- ▶ Weighs only 4.5kg when empty
- ▶ Available with angle mini mesh
- ▶ Allows for more flexibility when setting out secure areas

Evo 55's seamlessly forming 'S' bend shape



External profile of the 90° corner section





Evo system in action

The images to the right show the variety of situations when the Evo system can be implemented.

Barriers can be water filled or for a more permanent requirement sand filled and can be assembled with ease. They are designed to create a solid wall leaving no gaps between each barrier when linked together.

Supplied in highly visible alternate red and white colours, each model in the Evo barrier system can be enhanced with bright red and white reflective rails which have been purposely designed to fit securely to the barrier.

Evo 55 barriers with mesh fence add on



Evo 80 barriers forming a roadside divide



Stephen Fry and Kelly Holmes racing



Stacked Evo 55 barriers





Evo 1 / 55 stacking guide

The diagrams on this page are a guide as to the safe packing / stacking procedure when loading Evo 55 Barriers onto a curtain side trailer.

The Evo 55 Barrier weighs a relatively light 8kg, which combined with its unique stacking design enables you to stack the Evo 55 nine high.

The curtain side lorry has the capacity to take 648 Evo 55 barriers on a full load.

Diagram below demonstrates the correct loading formation when transporting a maximum load of 648 Evo barriers, onto a curtain sided arctic trailer.

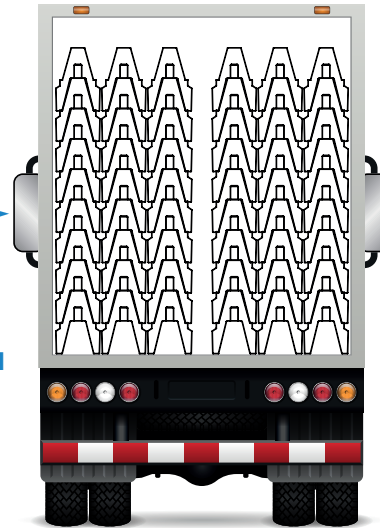
1

As viewed from trailer rear

Load from side



Evo 55 Barriers stacked 9 high and 6 across width of lorry bed



View from the side of the trailer



2

Side formation when loading Evo barriers



Bundle of Evo barrier being loaded onto an arctic





Evo 80 stacking guide

The diagrams on this page are a guide as to the safe packing / stacking procedure when loading Evo 80 Barriers onto a curtain side trailer

The Evo 80 Barrier weighs a relatively light 9kg, which combined with its unique stacking design enables you to stack the Evo 80 4x high and across 3 columns to achieve 12x barriers per bundle, two bundles can be positioned side by side equalling 24x spanning the width of the trailer.

The curtain side lorry has the capacity to take 20x bundles, a total of 240x barriers.

As viewed from trailer rear

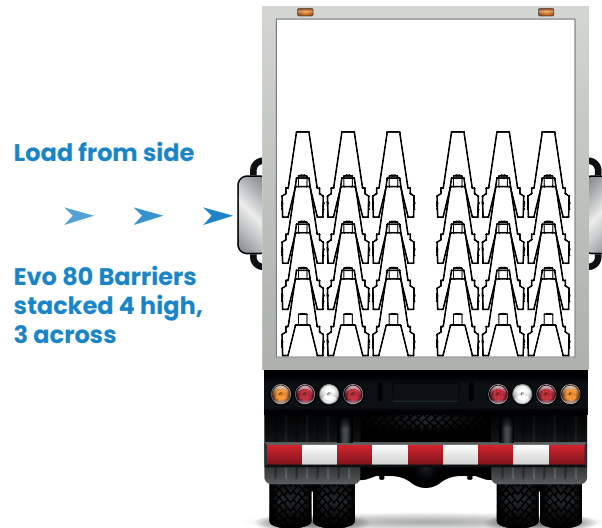
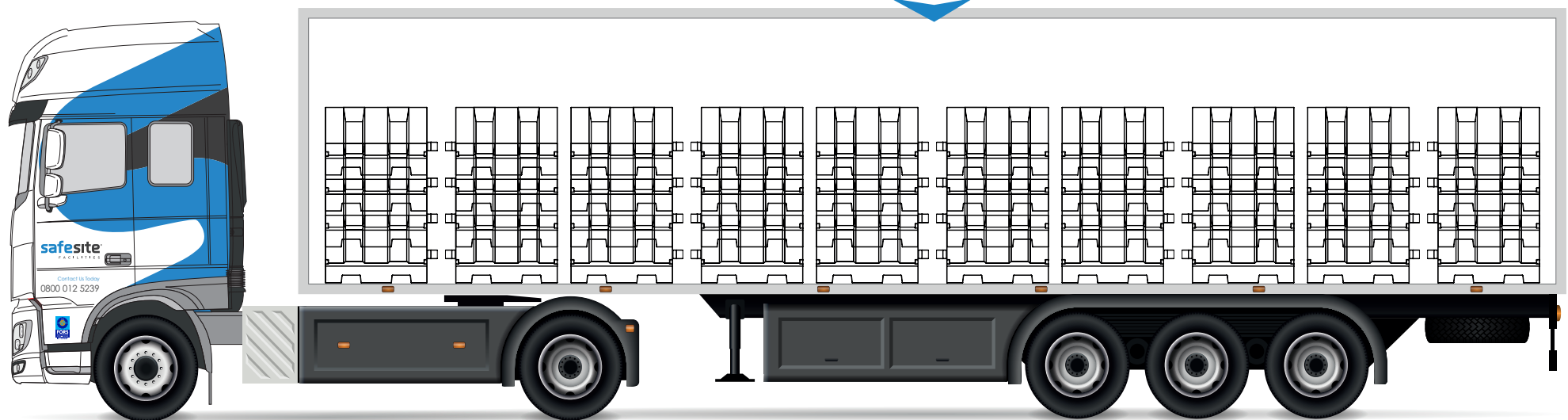


Diagram below demonstrates the correct loading formation when transporting a maximum load of 240 barriers, onto a curtain sided arctic trailer.

View from the side of the trailer





Evo 1.5 stacking guide

The diagrams on this page are a guide as to the safe packing / stacking procedure when loading Evo 1.5 Barriers onto a curtain side trailer

The Evo 1.5 Barrier weighs a relatively light 10kg, which combined with its unique stacking design enables you stack the Evo 1.5 9x high and across 3 columns to achieve 27x barriers per bundle, two bundles can be positioned side by side equalling 54x spanning the width of the trailer.

The curtain side lorry has the capacity to take 14x bundles, a total of 378x barriers.

As viewed from trailer rear

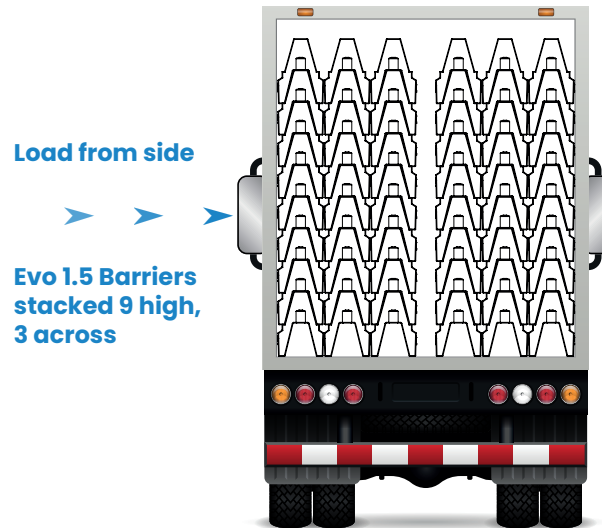
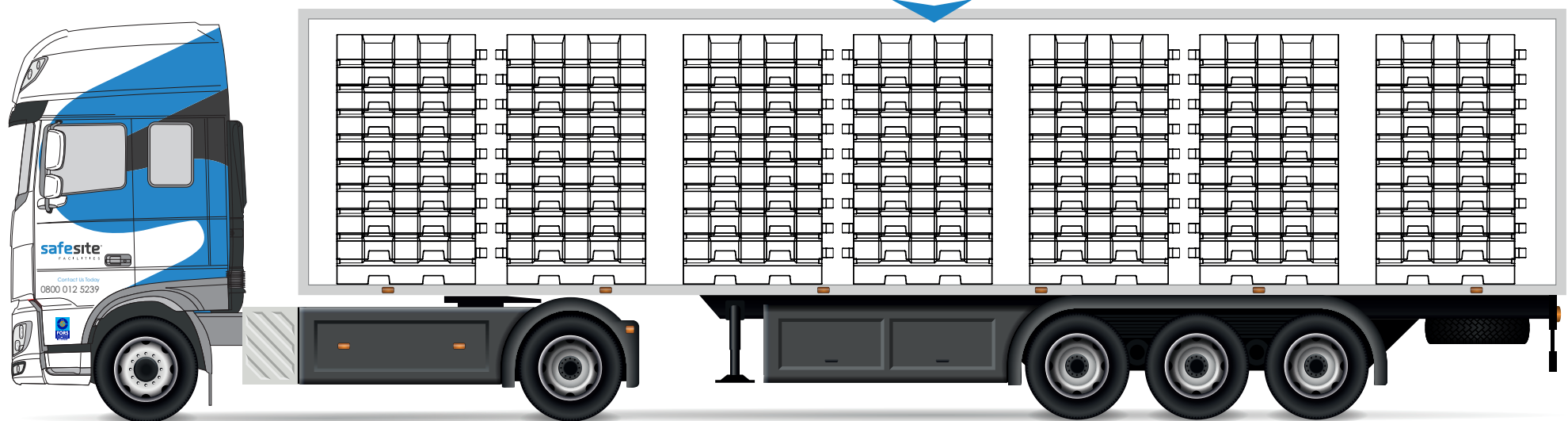


Diagram below demonstrates the correct loading formation when transporting a maximum load of 378 barriers, onto a curtain sided arctic trailer.

View from the side of the trailer





Unit 1, Martello Enterprise Centre, Courtwick Lane,
Littlehampton, West Sussex, BN17 7PA



info@safesitefacilities.co.uk



www.safesitefacilities.co.uk

The product information included in this document is correct at the time of print. Some of the details and specifications featured may change without prior notice. Please visit our website or contact our sales team for the most up-to-date information.